

## OUTHOR KORESPONDENSI

**Judul Artikel :** Impact Of Environmental Tobacco Smoke Exposure On Adults With Asthma Exacerbation

### Identitas Jurnal Ilmiah :

- a. Nama Jurnal : Asian J Pharm Clin Res,
- b. Nomor ISSN : Online - 2455-3891 Print - 0974-2441
- c. Volume, Nomor, Bulan Tahun : Vol 12, Issue 3, 2019
- d. Penerbit : Innovare Academics Sciences Pvt. Ltd
- e. DOI artikel (jika ada) : <http://dx.doi.org/10.22159/ajpcr.2019.v12i3.28498>
- f. Alamat Web Jurnal : <https://innovareacademics.in/journals/index.php/ajpcr/article/view/28498>
- g. Terindeks di : Scopus (Disc), DOAJ, Google scholar

### Riwayat Artikel

- 1. Submit artikel : 12 July 2018
- 2. Received : 14 July 2018,
- 3. Received : 20 September 2018,
- 4. Accepted : 13 December 2018
- 5. Publish : Maret 2019

### Lampiran Pendukung :

Solo, July 11, 2018

Editor in Chief  
Asian Journal of Pharmaceutical and Clinical Research

Dear Sir,

I hereby would like to submit an original manuscript to be published as a Research Paper at the Asian Journal of Pharmaceutical and Clinical Research, as follows:

Title : Impact of Environment Tobacco Smoke Exposure in Adults with Asthma Exacerbation

Authors : Sutaryono, Hartono, Ari Probandari, Prabang Setyono

Principal investigator: Sutaryono

Corresponding author: Sutaryono

Institution: Doctoral Program in Environmental Science, Universitas Sebelas Maret

Institution address: Jl. Ir. Sutami No. 36 A, Surakarta 57126, Central Java, Indonesia

E-mail address: [sutar.on@gmail.com](mailto:sutar.on@gmail.com)

I declare this manuscript has not been published before nor is concurrently submitted to any other journal. The letter of research ethics clearance is attached. Table of this manuscript is already placed in the manuscript.

I am looking forward to hearing from you on receipt of this paper submission and your decision to publish this paper. Thank you for your attention.

Best regards,  
Sutaryono

To  
Dr. Anurekha Jain  
Editor in Chief  
Asian Journal of Pharmaceutical and Clinical Research

Dear Dr. Anurekha Jain

The authors appreciate all comments from the editor to our manuscript. Herewith, we would like to resubmit the revised manuscript and our responses to the editor's comments point by point. The manuscript had been re-check for the English editing.

We thank that our manuscript has been recommended for publication on the upcoming AJPCR topic, we hereby enclose proof of payment. For academic purposes, would you like to send me the acceptance letter stating that our manuscript has been accepted by AJPCR.

Thank you for your consideration!

With kind regards,  
Authors

Dear Author

Please find attached file for corrections so please resend the file after filling the table.

We believe in quality and publishing on time so please read the mail carefully and send the corrections within 1 day. If you are not sending corrected manuscript on time to us then it would be rejected from the current issue and would be published in the next issue. We would not be responsible for not publishing article and publication of an uncorrected article if you are not submitting in the timeline.

Kindly download the galley proof for the reference no. AJPCR/28498. and if there are any possible errors of spelling, data or anything else kindly check it resend the corrected one quickly within 1 day. Mark the corrections in the pdf itself using sticky notes. (Send corrections to [editor@ajpcr.com](mailto:editor@ajpcr.com) )

(Please mention your article reference no.)

Important:- Abstract must be up to 250 words in a structured form, consisting of Objective, Methods, Results, and Conclusion in case the not received the structured abstract the article will not be published until the abstract is structured.

Please ensure that you have reviewed your article on the base of the points given below.

- 1.Format-: Headings and subheading should not be numbered.
- 2.Abbreviations-: At the first appearance in the abstract and the text, abbreviations should be preceded by words for which they stand.
- 3.Abstract: Rewrite Abstract which should be structural (Divide it into- Objective, Methods, Results, and Conclusion).
- 4.Symbol and units: It should be as per the International System of Units (SI). See it in instructions to authors and follow accordingly and strictly.
- 5.Equation tools should be used for formula/equation writing.
- 6.Errors: Grammatical and punctuation errors should be rectified. Authors are suggested to use smart tools like 1 checker, ginger, Grammarly, white smoke, etc.
- 7.Most of the words are stuck, rectified it strictly.
- 8.Insert Table(s) and Figure(s) in Result and Discussion Section at an appropriate place.
- 9.Headings of the table (s) and figure (s) should be rectified. See the latest issue of AJPCR.
- 10.Table: Column headings should be in sentence case and bold. See the latest issue of AJPCR.
- 11.Fig: Ensure that titles at x and y-axis are in sentence case and bold.
- 12.Reference citation- References are to be cited in parentheses/Square bracket like [1] in line with text.
- 13.Ensure citation of references as [1, 2] in case of 2 references and [1-3] in case of more than 2 references. Few other examples include [1, 2, 3-5, 6].
- 14.References: References are out of the format. Uniformity must be ensured in all the references. It should be made strictly as per Instructions to Authors. Journal's title should be non-italic, abbreviated without the use of full stop.
- 15.Pagination style is incorrect in references. Authors should refer to any latest published article in AJPCR. Digit appeared in starting page number should not be repeated in end page number. Ex. 12-5, 25-32, 125-7, 11456-62 etc.
- 16.Introduction: What is the rationale and novelty of study? It should be mentioned.
- 17.Results of same data have been given by table as well as by figures. Use only one mode table or figure.
18. Results should be expressed in mean $\pm$ SD/SEM. Sample size and proper footnotes should be mentioned below the tables.
- 19.Error bars should be included in the figure(s). Sample size and proper footnotes should be mentioned below figure(s).

20.The discussion could not be found. Only results have been given. Authors should make the comparison with previously reported such works to emphasize the importance of the presented work.

Kindly download the galley proof for the Your reference no. .and if there are any possible errors of spelling, data or anything else kindly check it resend the corrected one quickly. Mark the corrections in the pdf itself using sticky notes. ( send corrections to [editor@ajpcr.com](mailto:editor@ajpcr.com) )

## IMPACT OF ENVIRONMENTAL TOBACCO SMOKE EXPOSURE ON ADULTS WITH ASTHMA EXACERBATION

SUTARYONO<sup>1,2\*</sup>, HARTONO<sup>3</sup>, ARI PROBANDARI<sup>4</sup>, PRABANG SETYONO<sup>5</sup>

<sup>1</sup>Doctoral Program in Environmental Science, Universitas Sebelas Maret, Indonesia. <sup>2</sup>Department of Pharmacy, School of Health Science Muhammadiyah Klaten, Indonesia. <sup>3</sup>Department of Physiology, Faculty of Medicine, Universitas Sebelas Maret, Indonesia. <sup>4</sup>Department of Public Health, Faculty of Medicine, Universitas Sebelas Maret, Indonesia. <sup>5</sup>Department of Biology, Faculty of Mathematics and Natural Sciences, Universitas Sebelas Maret, Indonesia. \*Email: sutar.on@gmail.com

Received: 14 July 2018, Revised and Accepted: 13 December 2018

### ABSTRACT

**Objective:** Environment tobacco smoke (ETS) exposure in the household is dangerous to infants and children. Nicotine residue inhaled in the respiratory tract metabolized into cotinine which has the possibility of causing inflammation which can result in asthma exacerbation. The impact created by the exposure of ETS on children suffering from asthma is the sole objective of this research work.

**Methods:** A cohort study was carried out among 114 asthma patients aged 12–18 years old at three hospitals from January 2016 to March 2017. Data were obtained using self-reported questionnaires and cotinine urine test. The data analysis was carried with the use of cyclooxygenase proportional hazard model with 95% confidence interval (CI).

**Results:** The result of the research showed that 57% of the patients got the trigger (event). The respondents consisted of 61.5% of female, average age of 15 years, 50.8% of upper secondary education, 55.4% of body mass index (BMI) normal, and 63.1% low economic status persons. Median survival for the ETS-exposed group was in a 9<sup>th</sup> week, while the median survival for the ETS non-exposed group was >12 weeks. Multivariate exposure of ETS with asthma exacerbation was hazard ratio (HR), 2.17; 95% CI, 1.23–3.83, p=0.008 and gender HR, 1.72; 95% CI, 1.04–2.85, p=0.035.

**Conclusion:** ETS exposure in the household increases the risk of asthma exacerbation. Controlling the environment and education of children to avoid ETS exposure should be intensified.

**Keywords:** Environmental tobacco smoke, Cotinine, Survival, Asthma, Exacerbation.

© 2019 The Authors. Published by Innovare Academic Sciences Pvt Ltd. This is an open access article under the CC BY license (<http://creativecommons.org/licenses/by/4.0/>) DOI: <http://dx.doi.org/10.22159/ajpcr.2019.v12i3.28498>

### INTRODUCTION

Epidemiological studies show that smoking is a global health problem and it is seen as a risk factor for the emergence of various medical disorders, especially some non-communicable diseases [1]. Environment tobacco smoke (ETS) has to do with the pollution of the environment, most rooms, with tobacco smokes, and that is why it is usually referred to as second-hand smoke. It comes with devastating impacts such as cardiovascular death and respiratory diseases, infections, behavioral problems, low birth weight, sudden infant death syndrome, and cancer [2,3]. Groups that are particularly vulnerable to this secondhand smoke are children, so they are easily affected by asthma, pneumonia, sinusitis, and different allergies.

Globally, about 40% of children with respiratory problems got them from smoking parents, as a result of this, about 28% of children deaths were associated with ETS in 2004 [2]. People that smokes are at risk of developing diabetes mellitus as well as be at increased risk of cancer of the bladder [4,5]. Exposure to tobacco smoke can cause heart attacks, strokes, and even sudden death. It was found that smoking causes about 85% of lung cancers in the United States [6]. Sympathetic overactivity may lead to cardiovascular disease development in smokers. Cigarette smoking also has an adverse effect on serum ferritin, and other hematologic parameters and serum ferritin have been discovered to be one of the most reliable indicators of iron status [7,8]. The cyclooxygenase (Cox) proportional hazard model shows a higher hazard ratio (HR) for smokers prognostic impact in patients with lung adenocarcinoma [9].

One of the major effects of ETS that can result in death is asthma. Asthma is a chronic inflammatory disease of the respiratory tract characterized

by wheezing, coughing, and chest tightness due to respiratory tract blockages. Epidemiological study of asthma reveals that the prevalence of several countries ranged from 1% to 18% [10], while, nationally, in Indonesia, it showed 4.5% [11]. Asthma is caused by many factors which include gene, family history of allergy and asthma, viral respiratory infections, bacterial colonization, allergic sensitization, body weight, hypertension, and tobacco exposure. These are the main risk factors associated with childhood-onset asthma [12,13].

Leftover cigarette smoke on surfaces does not evaporate into the air; however, there is nicotine residue attached to the dust or stuff around us, such as clothes, carpets, walls, furniture, or chairs. Nicotine dust is not going to disappear in a short time, so it will be inhaled by others even though the smoker has left the place [14,15].

More than 5200 chemical components are found in cigarette smoke in the form of particles and steam [16]. These chemicals are dangerous and can cause damages to the respiratory tract, in such a way that they can block overall breathing work [17]. One of these chemicals is nicotine, and it has a secondary immunomodulatory effect of eosinophil function, by inhibiting the release of pro-inflammatory cytokines from macrophages [18,19].

ETS exposure in the household can increase the severity of asthma in children because while they are on the floor, they inhale dust of carpet, mildew, mite, and others which are equivalent to sucking four cigarettes a day. Over 90% of children spend their time indoors, and because of the ETS, indoor air pollution gives more harmful health effects than outdoor air pollution [20].

ETS exposure in the household can be inhaled through breath into the alveoli and then spread into the blood circulation if not stopped. In the metabolism, there are CYP2A6 genes, which are genes encoding P450 2a6 of cytochrome enzyme. This enzyme is responsible for 70%–90% of nicotine metabolism in blood to cotinine [21–24]. Therefore, ETS exposure can be assessed through cotinine measurement in urine, serum, or saliva.

Nicotine in cigarette smoke can trigger inflammation because it has a direct effect on neutrophils and macrophages through the activation of nicotinic acetylcholine receptors in nerve cells as well as non-nerve cells such as monocytes and endothelial [25]. Several studies have also shown an increase in neutrophil inflammation in the bronchi and an increased number of neutrophils will trigger an increase in eosinophils, which will secrete inflammatory mediators that play a significant role in triggering asthma. Decreased IgE serum, blood eosinophils, and fractional exhaled nitric oxide non-smoker's and former smoker's ages had higher thymic stromal lymphopoietin than those that never smoke. In addition, goblet cell numbers will increase and hypersecretion of mucus in the respiratory tract [26]. The presence of cotinine urine levels in smokers has a positive relationship to increased levels of PGE-M and LTE4. This plays a role in inflammation and carcinogenesis [27].

The novelty of this study is to assess the risk impact associated with exposing children living with asthma to ETS in the family. We hypothesize that asthmatic children who are exposed to ETS in the family will experience an asthma exacerbation faster than those who are not exposed to ETS in the family.

## METHODS

### Study design

A cohort study was carried out among 114 asthma patients from three hospitals - Center for Healthy Lung Community (BBKPM), Surakarta, Dr. Moewardi Hospital, Surakarta, and Lung Health Center (Balikesmas) Klaten, Central Java, Indonesia from January 2016 to March 2017 with the inclusion of some criteria. The research was carried out on respondents between the ages of 12 and 18 years. Survival analysis was carried out for asthma exacerbation.

### Research ethics

We conducted a written informed consent before the data collection. The research ethics were obtained from the Ethics Committee of the Faculty of Medicine, Universitas Sebelas Maret, Indonesia.

### Data collection

The data of respondents related to demography, BMI, and history of environmental tobacco exposure in the household were based on self-report gotten through interview and questionnaire at the beginning of the research. The history of cigarette use includes the presence of smokers at home and number of cigarettes per day (1 to 10, 11 to 19, 20 to 29, and >30/day). Data were evaluated at 12 weeks or 3 months through self-report or medical records from the hospital to obtain sensory time analysis data. Urine sampling was also done in early research on every subject. Urine samples were used to determine levels of cotinine with the use of Enzyme-Linked Immunosorbent Assay method [28–31]. Urine cotinine analysis data were classified into two categories which are: <15 ng/ml also known as non-exposed and higher than 15 ng/ml also known as exposed [28].

### Data analysis

Data on demography, BMI, cigarette use, and cotinine concentration were obtained with the use of frequency distribution and percentage. We used the Log-rank test to evaluate the difference in time-to-event endpoints between patient groups. Multivariate Cox Proportional Hazard Models were fitted using all the covariates, yielding HRs 95% confidence interval (CI) with SPSS software.

## RESULTS

Based on medical records from three hospitals; Center for Healthy Lung Community (BBKPM), Surakarta, Dr. Moewardi Hospital, Surakarta, and

Lung Health Center (Balikesmas) Klaten, Central Java, Indonesia from January 2016 to March 2017. The total number of asthma patients in the three health-care facilities was 4872 with the number of children with asthma recorded to be 726. There were 114 children who fulfilled the criteria, and they were used as samples. During the research period, it was found that the trigger status (event) was 57% and the sensor was 43%. Survival time showed that 50% respondent suffered the trigger in the 10<sup>th</sup> week, while the ETS-exposed group was in the 9<sup>th</sup> week.

Baseline characteristics as a single predictor of asthma exacerbation are summarized in Table 1. Cohort survival time showed that most of the respondents who suffered events were 61.5% female, at the mean age of 15 years, 50.8% of upper secondary education, 55.4% of BMI normal, and income <\$105 (63.1%). Cotinine test as ETS biomarker showed that a high concentration of cotinine suffered more events (75.4%).

The result of multivariate analysis with Cox regression (Cox proportional hazard model) showed that some variables, cotinine concentration and demographic variable (gender) have significant correlation with asthma exacerbation (HR, 2.17; 95% CI, 1.23–3.83) and (HR, 1.72; 95% CI, 1.04–2.85) (Table 2).

## DISCUSSION

Median survival for both ETS-exposed and non-exposed groups was 10 weeks. It shows that patients with asthma exacerbation will suffer the trigger in the 10<sup>th</sup> week. Asthma patients with ETS-exposed will rapidly suffer the trigger in the 9<sup>th</sup> week, while patients with ETS non-exposed were >12 weeks. The result has the similarity as the other research that finds an average rate of asthma trigger to be 14 weeks or 3.5 months/year (Figs. 1 and 2) [32].

**Table 1: The baseline of sociodemographic characteristics, ETS exposure, and trigger in adults with asthma exacerbation**

Variables	Event	Sensor	p value*
	n (%)	n (%)	
Age			
12–15	30 (46.15)	32 (65.31)	0.067
16–18	35 (53.85)	17 (34.69)	
Mean±SD	15±2.5		
Gender			
Female	40 (61.54)	20 (40.82)	0.065
Male	25 (38.46)	29 (59.18)	
Education			
Primary	32 (49.23)	33 (67.35)	0.056
Upper secondary	33 (50.77)	16 (32.65)	
BMI			
Normal	36 (55.38)	20 (40.82)	0.186
Abnormal	29 (44.62)	29 (59.18)	
Income			
<\$ 105	41 (63.08)	24 (48.98)	0.124
>\$ 105	24 (36.92)	25 (51.02)	
Cotinine			
>15 ng/ml	49 (75.38)	26 (53.06)	0.010
<15 ng/ml	16 (24.62)	23 (46.94)	

\*The log-rank test (Mantel Cox) was used for all other characteristics. BMI: Body mass index, ETS: Environment tobacco smoke, Cox: Cyclooxygenase

**Table 2: Results of the multivariate analysis for overall survival**

Variable	Level	HR (95% CI)	p value*
Gender	(Female vs. Male)	1.721 (1.040–2.849)	0.035
Cotinine	(>15 ng/ml and <15 ng/ml)	2.168 (1.226–3.832)	0.008

\*The Cox regression (Cox Proportional Hazard Model). HR: Hazard ratio, CI: Confidence interval, Cox: Cyclooxygenase



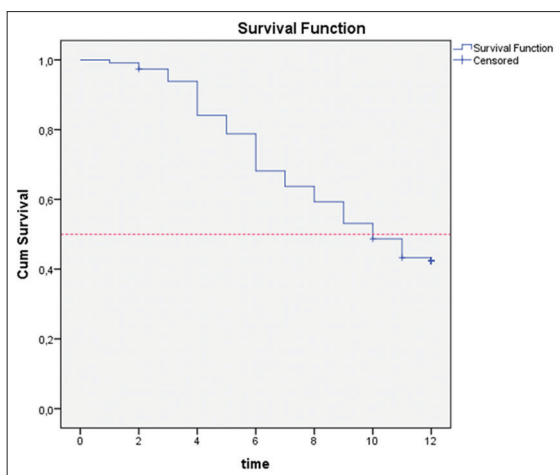


Fig. 1: Survival curve for the asthma exacerbation for all groups

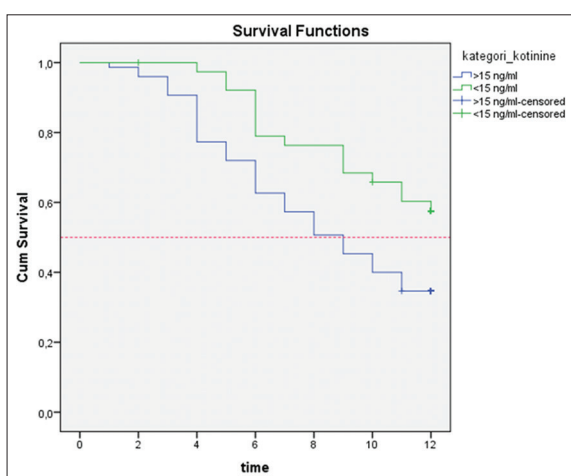


Fig. 2: Survival curve for the asthma exacerbation and cotinine environment tobacco smoke exposure

Hazard survival ETS with urinary cotinine concentration of biomarker and frequency on the trigger of asthma exacerbation was HR, 2.17; 95% CI, 1.226–3.832,  $p=0.008$ . The result of this research shows that ETS exposure measured with urine cotinine level in children suffering asthma has risk 2 of having asthma exacerbation more rapidly when compared to children with non-exposure of cigarette smoke. There is a research that has proved that mothers who smoke increase four-fold response to histamine as well as high level of cotinine increase the risk of acute asthma exacerbation by 1.8-fold [33]. Children with ETS-exposed have the higher risk of having uncontrolled asthma with OR=3.20; 95% CI=1.40–6.90 [34].

Children who live in homes with smoking members have increased cotinine level when compared with those living in homes with no smokers. It shows that ETS exposure is associated with the increasing urinary cotinine and acute exacerbation asthma trigger as well as decreasing lung function of forced expiratory volume in 1 s and the ratio of forced vital capacity [35]. Around 87.9% of nontobacco consumers in the United States had detectable acquired serum cotinine levels. Nearly 40% of children aged 2 months to 2 years are living with at least one smoker, and perhaps, their condition is exacerbated by ETS exposure [36].

A series of epidemiological surveys provide strong evidence of the relationship between parental smoking and the prevalence of asthma in school-age children [37,38]. A recent study and meta-analysis of 76 studies have assessed that the effects of pre- or post-natal second-hand

smoke exposure are associated with a 21–85% increased risk of asthma incident [39]. The strongest effect of prenatal maternal smoking on asthma in children aged 2 years old has CI 95% OR = 1.85 (1.3–2.5). In adolescence and adults, exposure to passive smoke is also associated with the prevalence of asthma [25].

The increase of urinary cotinine concentration is affected by the number of smokers in a household, and the number of cigarettes smoked. The result showed that the existing home smokers have cotinine concentrations >15 ng/ml at most. Category of heavy smokers or higher number of cigarettes >20 cigarettes per day areas is shown in Tables 3 and 4.

The variability of each individual against the pattern of cotinine metabolism due to exposure to existing nicotine is quite different. Therefore, it is possible that there may be the existence of cotinine in a household where there is no smoke. This may be attributed to exposure of the inhabitant(s) to cigarette smoke outside the home and other metabolism factors such as genetic variation, race, sex, use of oral contraceptives or other estrogen-containing hormones, renal, and drug failure, including anticonvulsants and rifampin as well as from foods they ate [23,40].

The main physiological features of asthma exacerbation are airways constriction and airflow obstruction, which are reversible. It is produced as a result of the contraction of bronchial smooth muscle, edema, and hypersecretion of mucus. Various trigger factors can lead to exacerbations. Acute bronchoconstriction caused by allergens occurs as a result of the release of mediators from mast cells [41]. The nature of tobacco smoke as inhalants, which are inhaled and exposed directly to the airway, causes a risk factor that has a relationship with asthma exacerbation events in children [17,42].

Our study found that children who lived with smokers tend to have high levels of cotinine and were more likely to experience asthma attacks compared to children who lived in smoke-free homes. These results prove that cigarette smoke triggers inflammation in the respiratory tract which causes asthma attacks exacerbation. Several studies have shown that an increase in the neutrophils inherent the airways will lead to an increase in eosinophils, which will release inflammatory mediators that play a role when asthma attacks [26]. People exposed to cigarettes will find an increase in T lymphocytes, especially CD8+ and macrophages along the airway wall, increased neutrophils in airway secretions, and peripheral airway infiltration with mononuclear cells and macrophages [43].

We also found the female gender more prone to having an asthma exacerbation HR attack, 1.72; 95% CI, 1.04–2.85). During our study of 114 children, the respondents were mostly girls (61.5%) and men (38.5%). Prakruthi *et al.* conducted a study which proved that women were more prone to asthma than men, out of 90 children examined, 66.7% females had asthma while 33.3% men were affected [44].

Tobacco smoke exposure may happen in a home (including childhood exposure from parents, siblings, other family members or from the environment). The best recommendation for individuals who have children with asthma exacerbations is the drug reliever and controller; however, long-term use of this medication has side effects. *Tamarindus indica* L. plants have been studied, and this plant can improve respiratory and anti-asthmatic patterns [45]. Proper preventive efforts and educational controls should be employed to stop smoking. The efforts of public health agencies through their regulations aimed at banning smoking in homes have successfully reduced ETS exposure.

## CONCLUSION

This research revealed that ETS exposure in the household increases the risk of asthma exacerbation. Since children with asthma should have good survival and quality of life, it is, therefore, necessary and expedient to control the environment and educates children to avoid ETS Exposure.

Table 3: ETS status at home and cotinine concentration

ETS Household	Cotinine	
	≥15 ng/ml	<15 ng/ml
Home with smoker	50 (66.7)	7 (17.9)
Home without smoker	25 (33.3)	32 (82.1)

ETS: Environment tobacco smoke

Table 4: Number of cigarettes and cotinine concentration

Number of cigarette	Cotinine	
	≥15 ng/ml	<15 ng/ml
<4	6 (12)	3 (42.9)
5-9	11 (22)	1 (14.3)
10-19	16 (32)	1 (14.3)
20-29	17 (34)	2 (28.6)

#### ACKNOWLEDGMENTS

We would like to thank Directors of the Center for Healthy Lung Community Surakarta, Dr. Moewardi Hospital Surakarta, and the Lung Health Center Klaten, Indonesia, for granting us access to facilities for this study. We also thank all enumerators and laboratory staff for assisting in the process of collecting data.

#### AUTHORS' CONTRIBUTIONS

All authors in this manuscript have contributed to the research. Sutaryono and Ari Probandari designed the research model, analyzed the data and compiled the manuscript. Sutaryono assisted by Prabang Setyono designed the framework, planned sample preparation and carry out data collection in the field. Hartono contributed in writing the script and supervision of all activities. All authors discussed and provided critical feedback on this text.

#### CONFLICTS OF INTEREST

The authors declare that there are no conflicts of interest regarding the publication of this paper.

#### REFERENCES

- World Health Organization. Global Status Report on Noncommunicable Diseases; 2010. Available from: [http://www.who.int/about/licensing/copyright\\_form/en/index.html](http://www.who.int/about/licensing/copyright_form/en/index.html). [Last accessed on 2016 Aug 29].
- World Health Organization. Facts on Secondhand Smoke; 2017. Available from: <http://www.who.int/news-room/fact-sheets/detail/tobacco>. [Last accessed on 2018 May 21].
- Treyster Z, Gitterman B. Second hand smoke exposure in children: Environmental factors, physiological effects, and interventions within pediatrics. *Rev Environ Health* 2011;26:187-95.
- Jyothirmayi B, Kaviarasi S, William E. Study of glycated hemoglobin in chronic cigarette smokers. *Int J Pharm Clin Res* 2013;5:4-6.
- Hireche A, Chaoui-kherouatou N, Ribouh A, Abadi N, Shi M, Satta D. Polymorphic deletions of glutathione s-transferases m1, t1 and bladder cancer risk in Algerian population. *Asian J Pharm Clin Res* 2018;11:458.
- Center for Disease Control and Prevention. Fact Sheet 2010 Surgeon General's Report How Tobacco Smoke Causes Disease: The Biology and Behavioral Basis for Smoking-Attributable Disease. Available from: [https://www.cdc.gov/tobacco/data\\_statistics/sgr/2010/index.htm](https://www.cdc.gov/tobacco/data_statistics/sgr/2010/index.htm). [Last accessed on 2017 May 31].
- Doss DS, Anandhalakshmi S, Rekha K, Antony KA. Effect of smoking on heart rate variability in normal healthy volunteers. *Asian J Pharm Clin Res* 2016;9:230-4.
- Shivasekar M, Vinodhini VM, Kumar YR. Study of serum ferritin in smokers. *Asian J Pharm Clin Res* 2018;11:11-12.
- Sajid N, Bangash AL, Hashim N, Ismail NE. Smoking status affecting survival of adenocarcinoma lung cancer patients in Kuala Lumpur, Malaysia. *Asian J Pharm Clin Res* 2017;10:63-4.
- Global Initiative for Asthma. Pocket Guide for Asthma Management and Prevention. *Glob Initiasthma*; 2016. p. 28.

- Riset Kesehatan Dasar. Badan Penelitian dan Pengembangan Kesehatan. Balitbangkes. Riset Kesehatan Dasar; 2013.
- Bisgaard H, Bonnelykke K. Long-term studies of the natural history of asthma in childhood. *J Allergy Clin Immunol* 2010;126:187-97.
- Rina A, Eff Y. Incidence of hypertension in asthma patients who treated with beta-2 agonists bronchodilators. *Int J Pharm Pharm Sci* 2017;9:2-5.
- Willers S, Gerhardsson L, Lundh T. Environmental tobacco smoke (ETS) exposure in children with asthma-relation between lead and cadmium, and cotinine concentrations in urine. *Respir Med* 2005;99:1521-7.
- Hoh E, Hunt RN, Quintana PJ, Zakarian JM, Chatfield DA, Wittry BC, et al. Environmental tobacco smoke as a source of polycyclic aromatic hydrocarbons in settled household dust. *Environ Sci Technol* 2012;46:4174-83.
- Perfetti T. The chemical components of tobacco and tobacco smoke. *Chromatographia* 2010;71:977.
- Montefort S, Ellul P, Montefort M, Caruana S, Grech V, Agius Muscat H, et al. The effect of cigarette smoking on allergic conditions in maltese children (ISAAC). *Pediatr Allergy Immunol* 2012;23:472-8.
- Holt PG. Immune and inflammatory function in cigarette smokers. *Thorax* 1987;42:241-9.
- Sopori ML, Kozak W. Immunomodulatory effects of cigarette smoke. *J Neuroimmunol* 1998;83:148-56.
- Koenig JQ, Mar TF, Allen RW, Jansen K, Lumley T, Sullivan JH, et al. Pulmonary effects of indoor- and outdoor-generated particles in children with asthma. *Environ Health Perspect* 2005;113:499-503.
- Gullstén H. Significance of Polymorphisms in CYP2A6 Gene. Oulu: Department of Pharmacology and Toxicology, University of Oulu; 2000.
- Rao Y, Hoffmann E, Zia M, Bodin L, Zeman M, Sellers EM, et al. Duplications and defects in the CYP2A6 gene: Identification, genotyping, and *in vivo* effects on smoking. *Mol Pharmacol* 2000;58:747-55.
- Hukkanen J, Jacob P 3<sup>rd</sup>, Benowitz NL. Metabolism and disposition kinetics of nicotine. *Pharmacol Rev* 2005;57:79-115.
- Davies GE, Soundy TJ. The genetics of smoking and nicotine addiction. *S D Med* 2009;Spec No:43-9.
- Mao J, Liu J, Pang X, Li M, Song J, Han C, et al. Nicotine induces the expression of C-reactive protein via MAPK-dependent signal pathway in U937 macrophages. *Mol Cells* 2012;34:457-61.
- Nagasaki T, Matsumoto H, Nakaji H, Niimi A, Ito I, Oguma T, et al. Smoking attenuates the age-related decrease in IgE levels and maintains eosinophilic inflammation. *Clin Exp Allergy* 2013;43:608-15.
- Mshimesh BA. Effects of etoricoxib, zileuton, and their combination on urinary PGE-M and LTE4 levels in iraqi smokers: A comparative study. *Int J Pharm Pharm Sci* 2016;8:182-7.
- Seccareccia F, Zuccaro P, Pacifici R, Meli P, Pannozzo F, Freeman KM, et al. Serum cotinine as a marker of environmental tobacco smoke exposure in epidemiological studies: The experience of the MATISS project. *Eur J Epidemiol* 2003;18:487-92.
- Matsumoto A, Ino T, Ohta M, Otani T, Hanada S, Sakuraoaka A, et al. Enzyme-linked immunosorbent assay of nicotine metabolites. *Environ Health Prev Med* 2010;15:211-6.
- Kalkbrenner AE, Hornung RW, Bernert JT, Hammond SK, Braun JM, Lanphear BP, et al. Determinants of serum cotinine and hair cotinine as biomarkers of childhood secondhand smoke exposure. *J Expo Sci Environ Epidemiol* 2010;20:615-24.
- Avila-Tang E, Al-Delaimy WK, Ashley DL, Bernert JT, Kim S, Samet JM. Assessing secondhand smoke using biological markers. *Tob Control* 2013;22:164-71.
- Karadag B, Karakoc F, Ceran O, Ersu R, Inan S, Dagli E. Does passive smoke exposure trigger acute asthma attack in children? *Allergol Immunopathol (Madr)* 2003;31:318-23.
- Jingyi Xu, Smiley-Jewell S, Claude J, Pinkerton KE. Effects of environmental tobacco smoke during early life stages. *Lung* 2015;???:385-97.
- Sutaryono P, Hartono H, Probandari NA, Setyono P, Budiastuti S, Masykuri M. Association between Exposure to Environmental Tobacco Smoke and the Risk of Uncontrolled Asthma in Children. In: International Conference on Public Health. Indonesia: Masters Program in Public Health, Graduate School, Universitas Sebelas Maret.
- Chilmonczyk BA, Luis M, Salmun R, Keith N, Megathlin L, Louis M, et al. Association between exposure to environmental tobacco smoke and exacerbation of asthma in children. *N Engl J Med* 1993;328:1665-9.
- ergen PJ, Fowler JA, Maurer KR, Davis WW, Overpeck MD. The burden of environmental tobacco smoke exposure on the respiratory health of children 2 months through 5 years of age in the United States: Third national health and nutrition examination survey, 1988 to 1994. *Pediatrics* 1998;101:E8.



1	37. Gilliland FD, Islam T, Berhane K, Gauderman WJ, McConnell R, Avol E, <i>et al.</i> Regular smoking and asthma incidence in adolescents. <i>Am J Respir Crit Care Med</i> 2006;174:1094-100.	2009;45 Supl 7:2-35.	1
2		42. Jindal SK, Gupta D. The relationship between tobacco smoke and amp; bronchial asthma. <i>Indian J Med Res</i> 2004;120:443-53.	2
3	38. Yang GH, Ma JM, Liu N, Zhou LN. Smoking and passive smoking in chinese, 2002. <i>Zhonghua Liu Xing Bing Xue Za Zhi</i> 2005;26:77-83.	43. Di Stefano A, Capelli A, Lusuardi M, Caramori G, Balbo P, Ioli F, <i>et al.</i> Decreased T lymphocyte infiltration in bronchial biopsies of subjects with severe chronic obstructive pulmonary disease. <i>Clin Exp Allergy</i> 2001;31:893-902.	3
4		44. Prakruthi GM, Bharathi DR, Yogananda R. A case control study on determinants of childhood asthma in school children of Chitradurga city. <i>Int J Curr Pharm Res</i> 2018;10:11-5.	4
5	39. Hayatbakhsh MR, Sadasivam S, Mamun AA, Najman JM, Williams GM, O'Callaghan MJ, <i>et al.</i> Maternal smoking during and after pregnancy and lung function in early adulthood: A prospective study. <i>Thorax</i> 2009;64:810-4.	45. Mahmudah RA, Adnyana IK, Kurnia N. Anti-asthma activity of tamarind pulp extract ( <i>Tamarindus indica</i> L.). <i>Int J Curr Pharm Res</i> 2017;9:3-6.	5
6			6
7	40. Benowitz NL. Biomarkers of environmental tobacco smoke exposure. <i>Environ Health Perspect</i> 1999;107 Suppl 2:349-55.		7
8			8
9	41. Plaza V, Álvarez F, Calle M, Casanova C, Cosío BG Vina L. GEMA (Spanish guideline on the management of asthma). <i>Arch Bronconeumol</i>		9
10			10
11			11
12			12
13			13
14			14
15	Author Queries???		15
16	AQ1:Kindly provide author full name		16
17	AQ2:Kindly provide the volume number		17
18			18
19			19
20			20
21			21
22			22
23			23
24			24
25			25
26			26
27			27
28			28
29			29
30			30
31			31
32			32
33			33
34			34
35			35
36			36
37			37
38			38
39			39
40			40
41			41
42			42
43			43
44			44
45			45
46			46
47			47
48			48
49			49
50			50
51			51
52			52
53			53
54			54
55			55
56			56
57			57
58			58
59			59
60			60
61			61
62			62
63			63
64			64
65			65
66			66
67			67
68			68
69			69